

Hisense

Qingdao Hisense HVAC Equipment Co., Ltd.
Hisense International Center, Qingdao, China

<http://www.hisensehvac.com> hhexport@hisense.com [Hisense HVAC](#) [Hisense HVAC](#) [Hisense HVAC](#)



HCAC-ATW-R290GB202410

★ Design and specifications are subject to change without notice. Pictures and diagrams are for reference only and are subject to change without notice.
All rights reserved by Qingdao Hisense HVAC Equipment Co., Ltd.

Hisense

Hi-Therma Smart

R290 Heat Pump Product Catalogue



Reimagine your solution

Hisense

海信国际中心

Hisense SINCE 1969

Hisense is a well-known large-scale electronic information industrial group. With strong emphasis on technology and innovation, its efficient technological innovation system firmly grounds Hisense at the forefront of its peers. At present, Hisense brand family has expanded to include multiple famous brand Hisense, Toshiba, Gorenje and ASKO.

SINCE 1969

BUSINESS OVERVIEW

Multimedia

- TV and Display Devices
- Internet TV Operation
- Mobile Communication Devices
- Optical Communication Devices
- Chip

Household Appliances

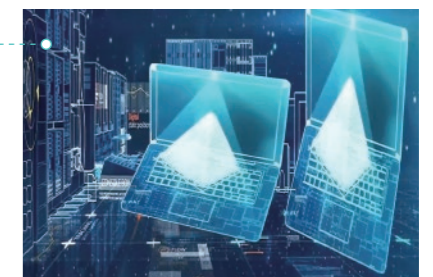
- Refrigerator
- Freezer
- Air-conditioner
- Washing Machine
- Kitchen Appliance

IT Smart Systems

- Smart City
- Smart Community
- Smart Transportation
- Smart Business
- Medical Electronic Devices
- Smart Home System and Service

Real Estate & Modern Services

- Real Estate
- High-end Shopping Mall Chain
- Mould Design and Manufacturing
- Finance
- Trade



GLOBAL HISENSE SINCE 1969

Hisense has started a long-term sports marketing strategy to increase brand awareness worldwide. After the successful sponsorship of **UEFA EURO 2016 & 2020** and **FIFA WORLD CUP 2018 & 2022**, Hisense has made clear its focus on football. Hisense also is the official partner of **UEFA EURO 2024**.



Team Supplier to Red Bull Racing

Official Partner of UEFA EURO 2016

Official Sponsor of 2018 FIFA World Cup



Official Partner of UEFA EURO 2020

Official Sponsor of 2022 FIFA World Cup

Official Partner of UEFA EURO 2024



Hisense HVAC MANUFACTURING BASE

Qingdao Hisense HVAC Equipment Co. Ltd. is a leading manufacturer of heating, ventilation, air conditioning and other HVAC equipments, integrated with the product development, manufacturing, sales and after-sales service as a whole.

Hisense HVAC always regards product technology research and development as the most important value. With strong technological innovation capabilities, Hisense HVAC has participated in the formulation and revision of 112 national standards, industry standards and association standards, and boasts 2020 authorized patents in the field of CAC and heat pump products. With the great support of all shareholders and customers, Hisense HVAC is expected to become the leading brand in the industry.

Note: The above data is as of Dec. 31th, 2023.



266,000 m²
Manufacturing Area



40+
Production Line

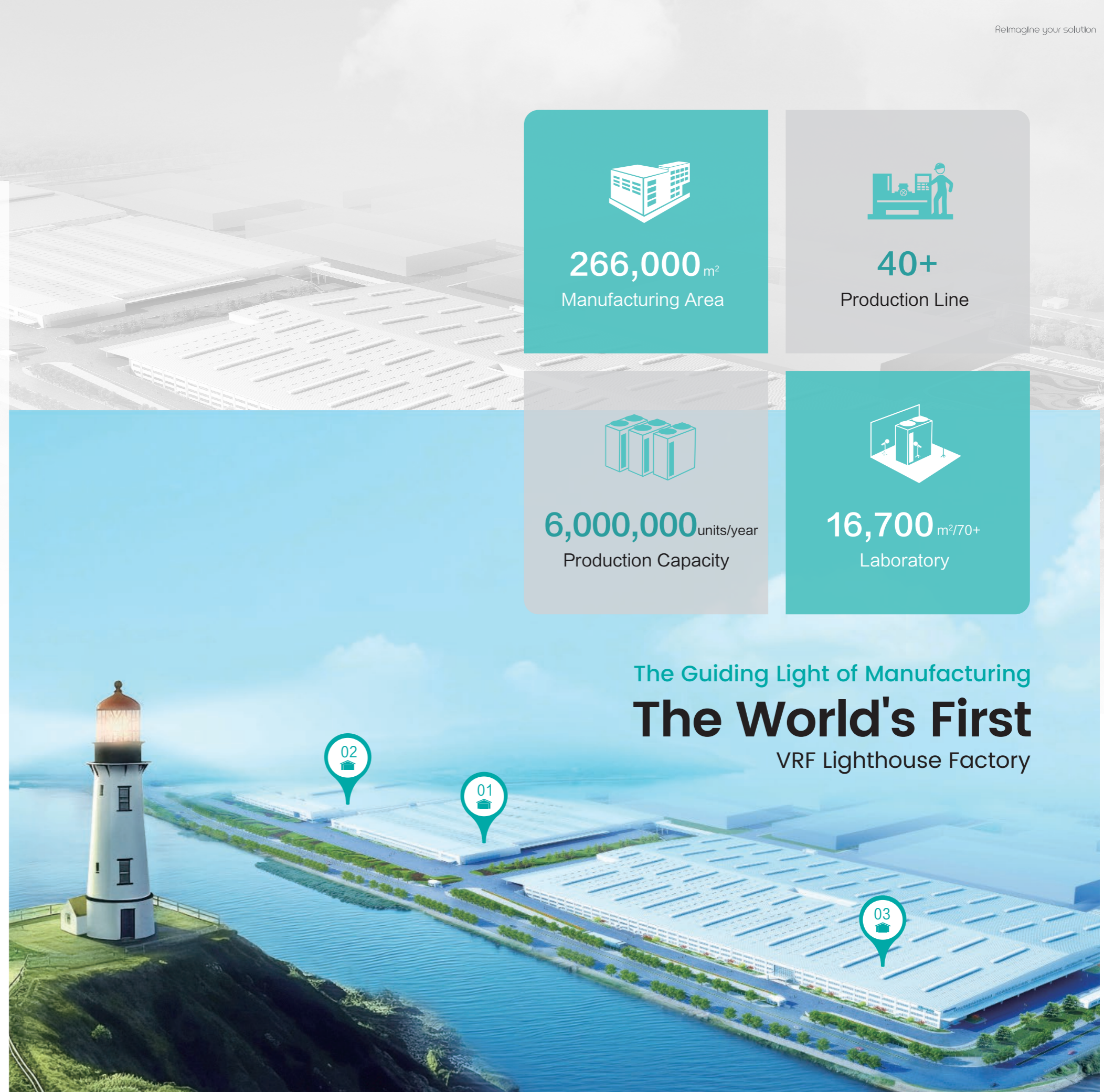


6,000,000 units/year
Production Capacity



16,700 m²/70+
Laboratory

The Guiding Light of Manufacturing
The World's First
VRF Lighthouse Factory



What is an Air-to-Water Heat Pump System ?

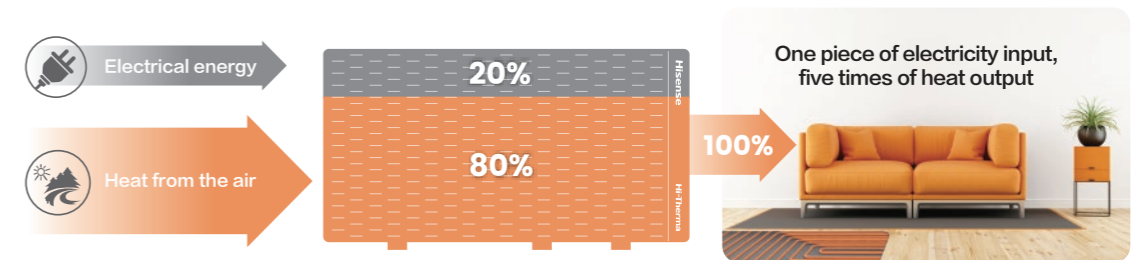
Hi-Therma Smart



The ATW heat pump system is a revolutionary solution for cooling, heating and domestic hot water. It converts renewable energy sources like air, soil and water into useful heat through a refrigerant cycle, which is more energy-efficient and eco-friendly than traditional fossil fuel boilers.

Advanced Renewable Energy Utilization Technology

Thanks to the advanced heat pump technology, Hi-Therma Smart M Series can pump heat from the natural air source with a small amount of electricity used, and then supply a large amount of heat to your home. The heat output is greater than the electricity input, making the system highly efficient.



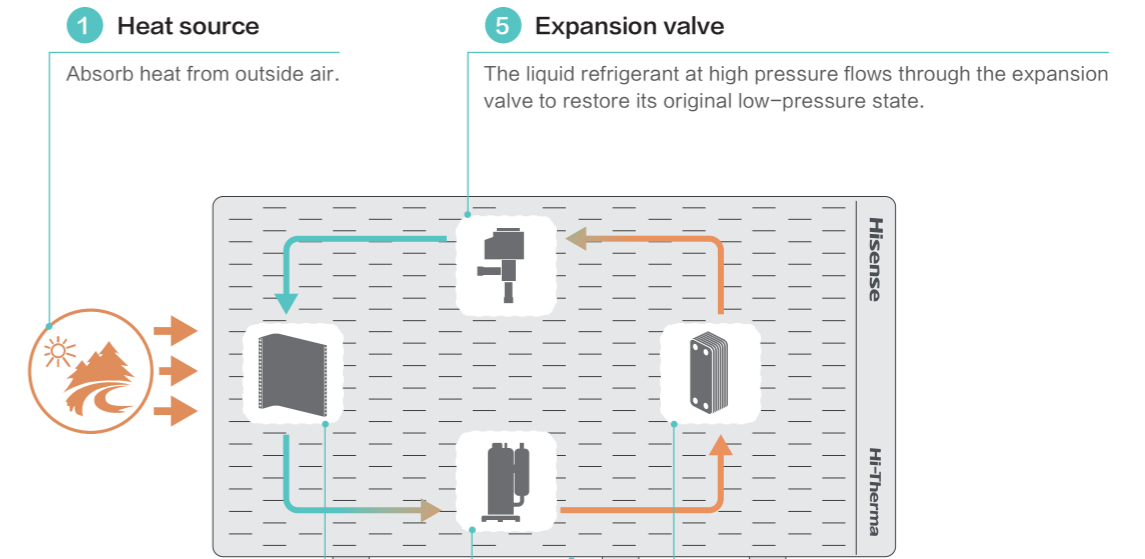
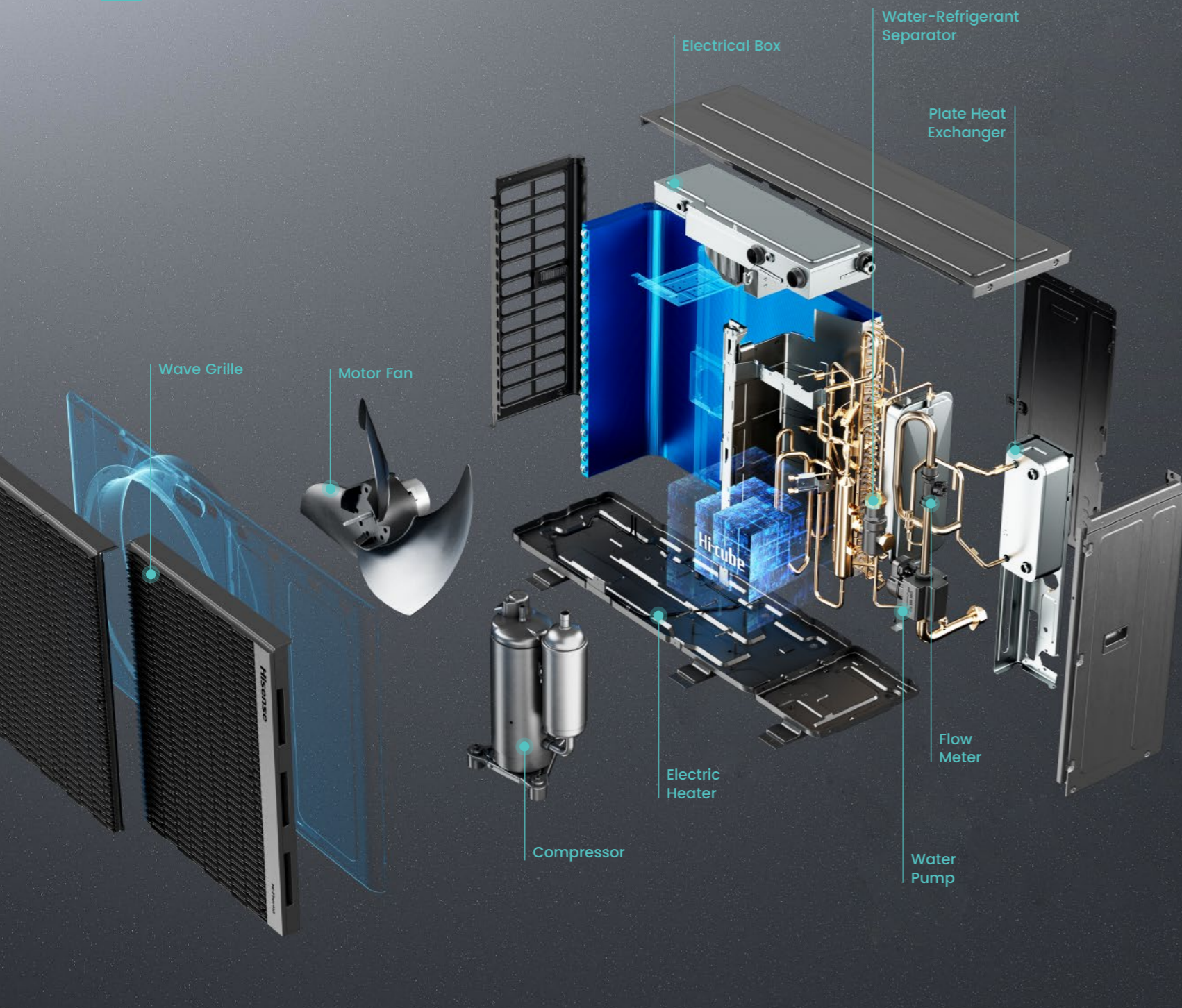
Sustainable Alternative to Conventional Boilers

Traditional heating systems rely on fossil fuels like gas, oil, and coal, which have caused heavy environmental pollution and greenhouse gas emissions. Hi-Therma Smart M Series has been developed to meet the increasing demand for eco-conscious devices in both newly-built and renovated homes, reducing environmental impact and minimizing energy consumption to the greatest extent.



How do an Air-to-Water Heat Pump System Works ?

Hi-Therma Smart



- 1 Heat source**
Absorb heat from outside air.
- 2 Evaporator**
When absorbing heat from the air, the low-temperature refrigerant will transition from liquid phase to vapor phase.
- 3 Compressor**
The vaporized refrigerant flows into the compressor where it absorb the heat generated by the electrical energy, making it a high-temperature and high-pressure gas refrigerant.
- 4 Condenser**
The refrigerant gas at high temperature and pressure flows into the heat exchanger, where the heat energy is transferred from the refrigerant to water for heating purpose.
- 5 Expansion valve**
The liquid refrigerant at high pressure flows through the expansion valve to restore its original low-pressure state.



Domestic Hot Water



Underfloor Heating



Radiator Heating



Fan Coil Unit

Regulations and Certifications

Hi-Therma Smart

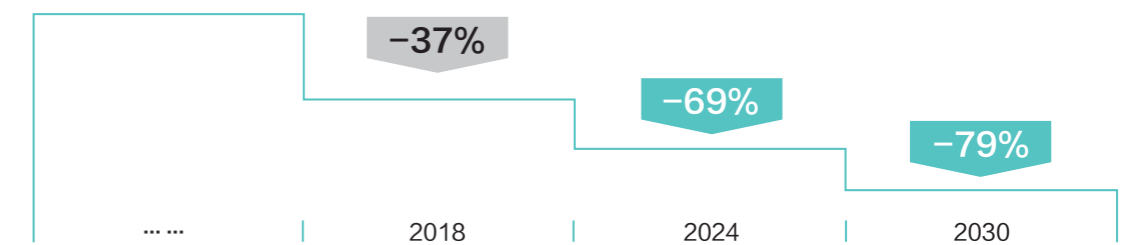


F-Gas Regulation

European regulation F-GAS (517/2014) came into force on 1st January 2015, in order to reduce greenhouse gas emissions. It aims to reduce the environmental impact of F-gases through the reduction of the amount of HFC (hydrofluorocarbon) refrigerant used in cooling and heating systems.

The regulation 517/2014 prescribes a phase-down of HFCs, where the quantities of HFCs that are placed on the market are gradually reduced through the allocation of quotas by the European Commission. The phase-down targets are expressed in CO₂ equivalents (= kg x GWP- Global Warming Potential) and aim to reduce HFC consumption by 79% in 2030.

Consumption of HFC compared to CO₂ equivalent tonnes



KEYMARK Certificate

The Heat Pump KEYMARK is a voluntary, independent European certification mark (ISO type 5 certification) for all heat pumps, combination heat pumps and hot water heaters (as covered by Ecodesign, EU Regulation 811/2013 and 813/2013).

It is based on independent, third party testing and demonstrates compliance with product requirements as set in the Heat Pump KEYMARK scheme rules and with efficiency requirements as set by Ecodesign.

The Heat Pump KEYMARK scheme is owned by the European Committee for standardization (CEN). The certificates are granted by independent Certification Bodies to products fulfilling all requirements of the scheme.

Check all our certified heat pumps on: www.heatpumpkeymark.com



Product Lineup Overview

Series	Hi-Therma Smart		
Type	Monobloc	Hydro-split	Hydro-integra
Diagram		Coming soon 	Coming soon
Refrigerant Type	R290	R290	R290
Line-up	1 phase 5.0/8.0/10.0kW	1 phase 5.0/8.0/10.0kW	1 phase 5.0/8.0/10.0kW
Application			
Energy Label Space Heating 35°C	A+++	A+++	A+++
Energy Label Space Heating 55°C	A++	A++	A++

Features Overview

Environment Friendly

- Award-Winning Futuristic Design
- Interior Aesthetics Design
- R290 Eco-Friendly Refrigerant
- Triple Refrigerant Safety Protection

Energy Saving

- High SCOP Performance
- A+++ Energy Efficiency
- Maximize Energy Utilization with PV Interlocked

Effortless Comfort

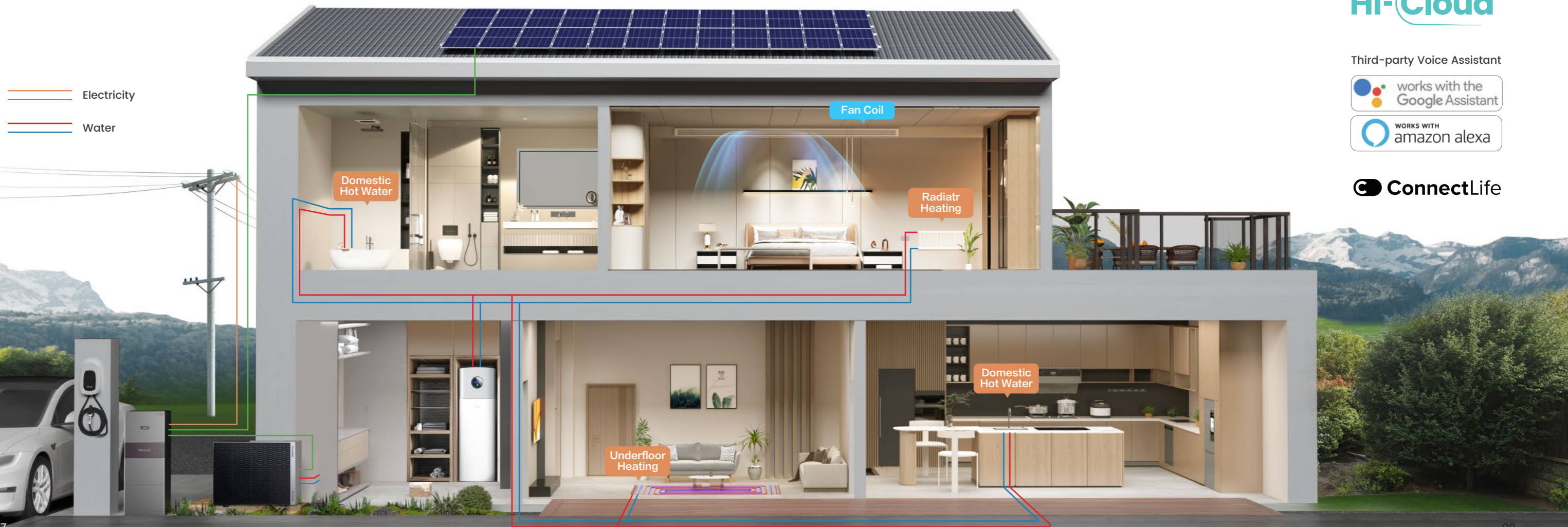
- Up to 75°C Outlet Water at -10°C
- 7°C Heating Capability Unaffected
- Wide Operation Range
- Whisper-quiet Operation
- Bottom Anti-frosting Design
- Two Separate Temp. Cycles
- 7 Rooms Independent Temp. Control
- Interlock with 3rd Party Heat Source
- Swimming Pool Heating Available

Easy Use

- Remote Control Anywhere and Anytime
- Smart Control with Voice Assistant
- Interconnection with ConnectLife
- Energy Consumption Visualization
- OTA Remote Software Upgrade
- USB Plug-and-Play Configuration
- Multiple Networking Methods
- Modbus Integration Supported
- One-stop Maintenance Service
- Data Storage for Subsidies

Easy Installation

- Easy Transportation with Compact Body
- Easy Installation with Adjustable Base Brackets
- Detachable Modular Grilles
- Convenient Circuit Commissioning
- Integrated Waterway Components
- Streamlined Wiring Connection



Third-party Voice Assistant



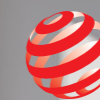
Environment Friendly



Eco-Friendly
Refrigerant



Award-Winning
Futuristic Design

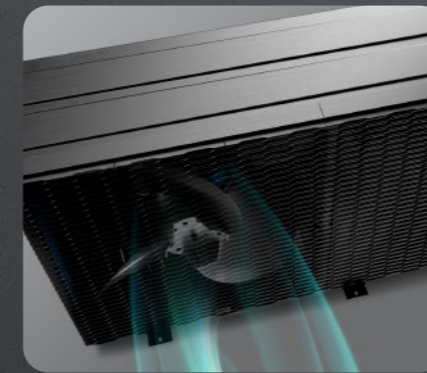


reddot design award
Interior Aesthetics Design



Transforming Technology into Art

A visual treat that pleases your eyes and captivates your senses



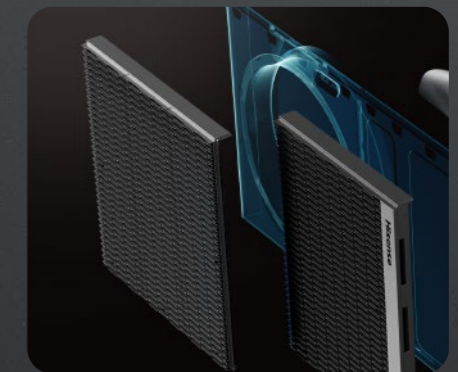
Smooth Wave grille, Reduced Fan Noise



Environmental-friendly Recyclable Plastics



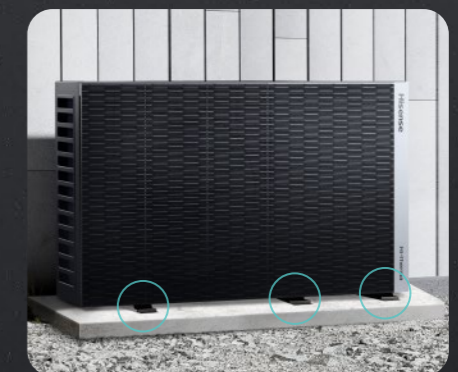
Decorative Metal Plaque



Detachable Modular Grilles



Geometric Design with Smooth Edges



Invisible Base Brackets

IF Award-Winning, Minimalist & Futuristic Aesthetics

The state-of-the-art design of Hi-Therma Smart M Series conveys our pursuit for sustainability, futurism, and minimalism. It adopts a streamlined geometric design with smooth edges treated with high-quality craftsmanship. The modular grilles is made of environmental-friendly recyclable plastics, with the specially-designed decorative metal plaque on the right side. Whether in residential or commercial spaces, it can seamlessly integrate into the environment.



Red Dot Award-winning, Interior Aesthetics Design

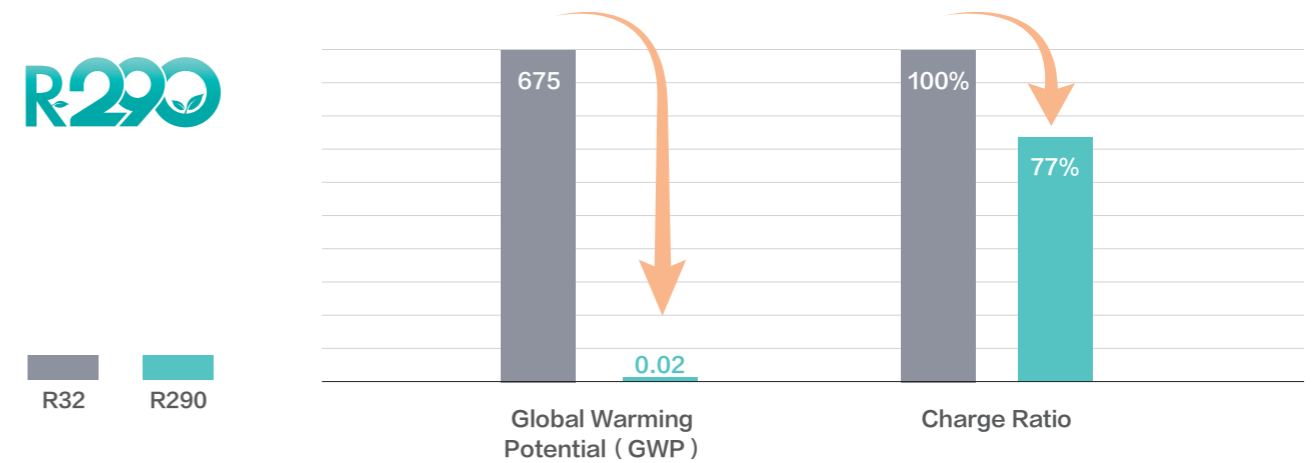
Our Red Dot Award-winning indoor unit integrates modern minimalist with classic elegance, tailored to seamlessly blend with your interior decor. They are not only home appliances, but also artistic expressions that elevate the ambiance of your space, turning the ordinary into extraordinary.



R290 Eco-Friendly Refrigerant

R290, also known as propane, is an eco-friendly refrigerant that marks a significant step forward for sustainable HVAC solutions. Unlike traditional refrigerants such as R-22 or R-410A which contain ozone-depleting substances or have high global warming potential, R290 offers a much greener alternative with nearly zero (only 0.02) carbon emissions that contributes to mitigating climate change.

- ◆ Zero Ozone Depletion Potential (ODP=0)
- ◆ Lower Global Warming Potential (GWP=0.02)
- ◆ Less charge amount under the same capacity
- ◆ Higher Energy Efficiency



Triple Refrigerant Safety Protection

While R290 is classified as a mildly flammable refrigerant, strict safety protection measures are conducted to ensure your peace of mind. The electrical box is fully sealed, and all internal components comply with A3 explosion-proof standard, preventing any electrical ignition in case of refrigerant leaks. Besides, the Water-Refrigerant Separator prevents the refrigerant from entering the living space, further enhancing safety.

Triple Safety Measures

- 1 All electrical components comply with A3 explosion-proof standard
- 2 The electrical box is fullysealed to prevent refrigerant from entering
- 3 Water-Refrigerant separator with high discharge rate to prevent refrigerant from entering into the room



Energy Saving

1 piece of electricity input **5** times of heat output

Energy Efficiency

A+++



HIGH SCOP
PERFORMANCE

5.0+

Hisense

Hi-Therma

*SCOP: Seasonal Coefficient of Performance

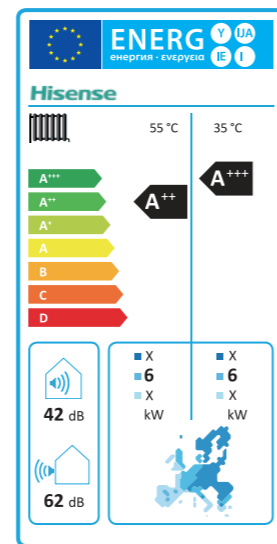
High SCOP Performance

Boasting a High SCOP Performance of 5.0+, this remarkable rating ensures maximum heating performance while significantly reducing your energy consumption and carbon footprint.



A+++ Energy Efficiency

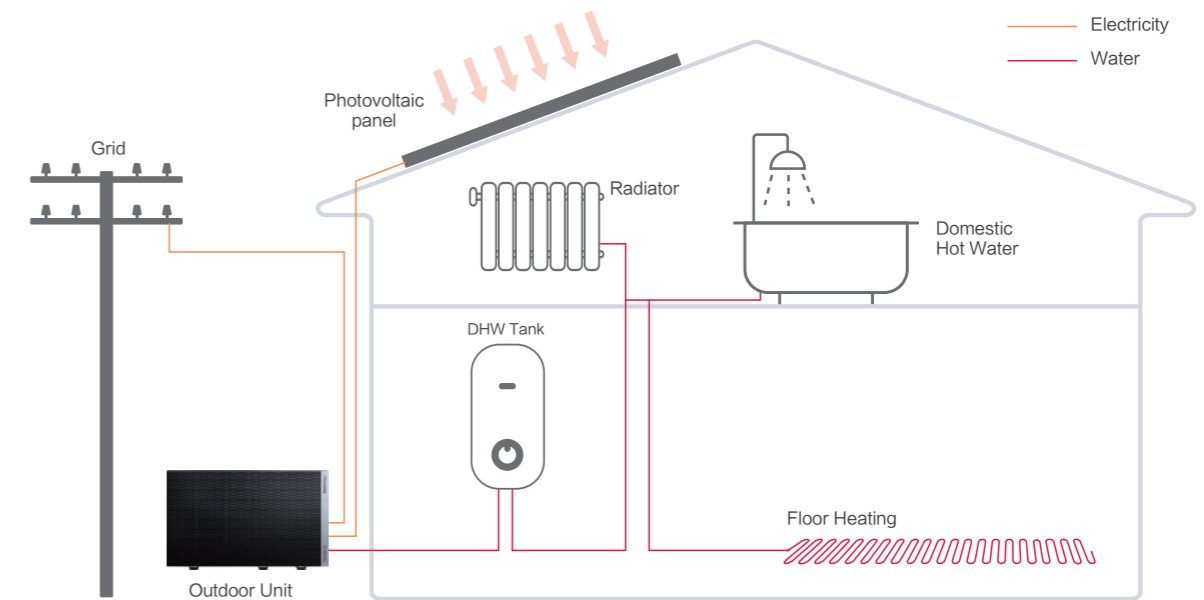
Hi-Therma Smart offers the best efficient solution for home heating and hot water supply. It has the top class A+++ energy classification at 35°C and A++ at 55°C, which saves on your energy bills and reduces impact on the environment.



Energy Label

Maximize Energy Utilization with PV Interlocked

Maximize your energy efficiency with photovoltaic (PV) storage interlocked, ensuring that renewable energy is utilized to its fullest potential, and leading to significant cost savings and environmental benefits.



4 Energy Utilization Scenarios (Optional) :

Day

During the daytime, solar panels power your home and store surplus energy in the home battery.

Charging

PV → Grid → Home Battery

Night

At night, prioritize using the home battery to power your home.

Discharging

Home Battery → Home

Peak / Off-peak time

Charge your home battery using off-peak grid rates. Then, use the energy stored in your battery to power your home when grid rates are high.

Peak Discharging

Grid (Off-peak) → Home Battery → Home (Peak)

Grid Outage

Discharge during a power outage, functioning as backup power to ensure the normal operation of your home appliances.

Discharging

Home Battery → Home

— Primary Use - - - - - Secondary Use - - - - - Restricted Conditions

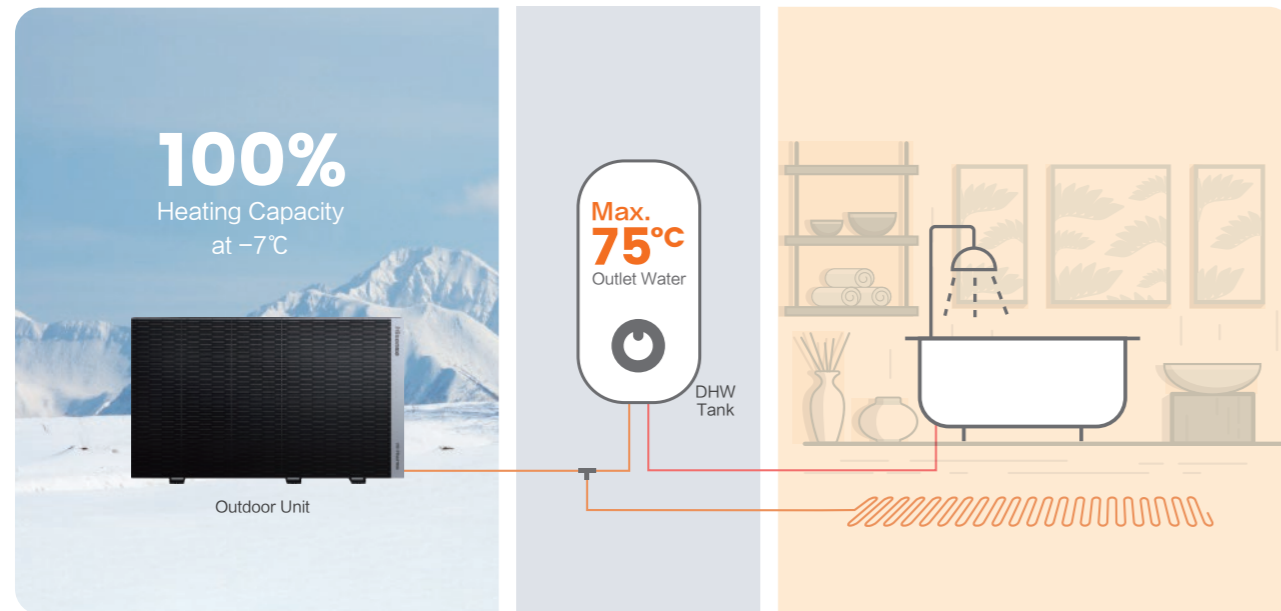
Effortless Comfort

 **75°C**
Outlet Water
at -10°C

100%
Heating Capacity
Unaffected at -7°C 

Consistent Warmth Guaranteed

Our cutting-edge system guarantees stable operation even when the outdoor temperature is as low as -25°C , and 100% heating capacity is guaranteed at -7°C , effortlessly meeting the heating demand in extreme cold areas. With the ability to produce up to 75°C outlet water even at -10°C , you can enjoy health and warmth with effective sterilization.



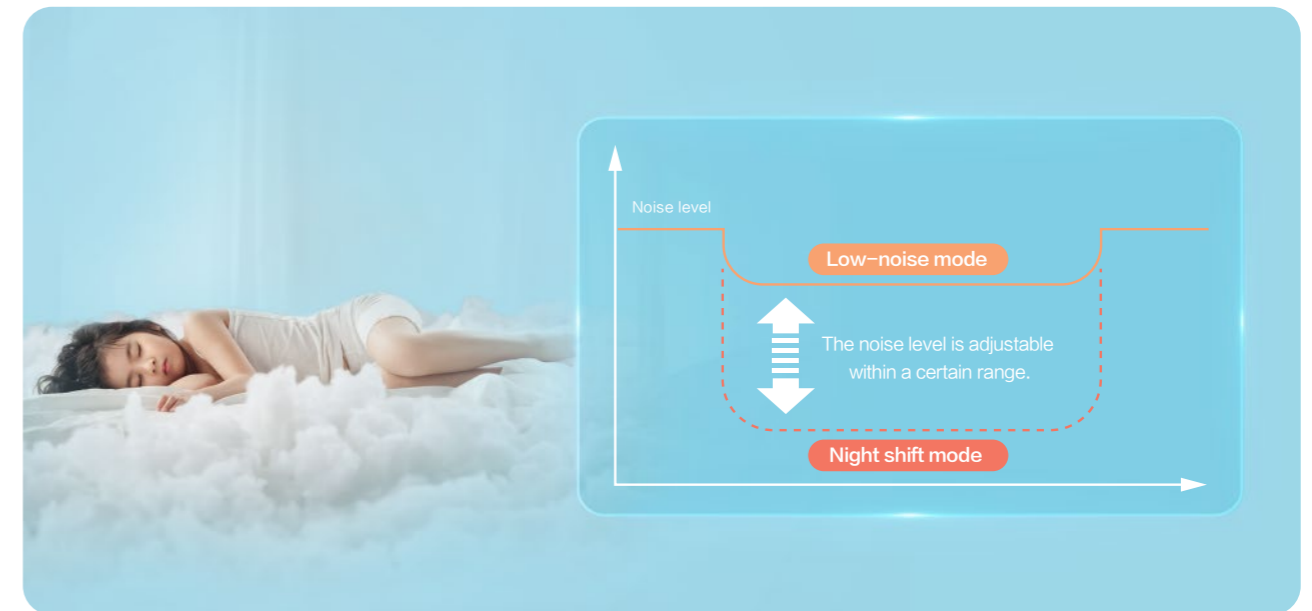
Wide Operation Range

Experience ultimate heating and cooling performance in every season, with outdoor ambient temperature range for heating operation from -25°C to 35°C , for domestic hot water from -25°C to 46°C , and for cooling from 5°C to 48°C .



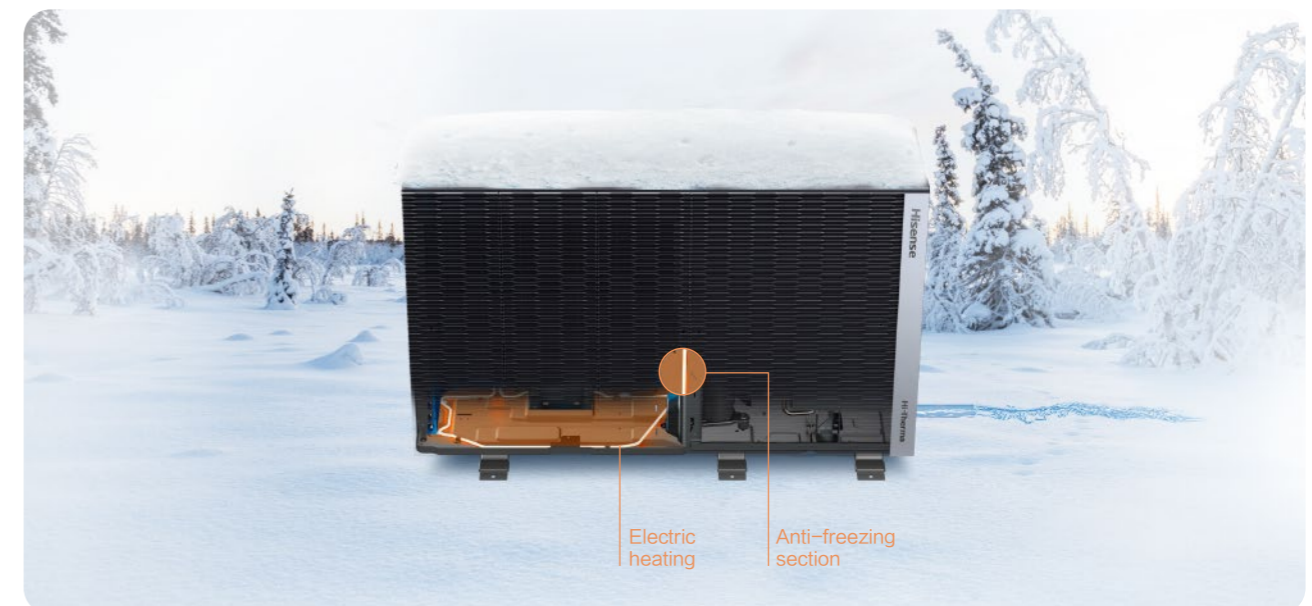
Whisper-quiet Operation

Hi-Therma Smart M Series can work in a low-noise operation mode for optimal user comfort, with max.8 dB(A) can be reduced. Under the night shift mode, the operation period can be set according to individual needs, further lowering the sound pressure level to an ultra-quiet 36dB(A). All these modes can be adjusted with a simple touch on the controller.



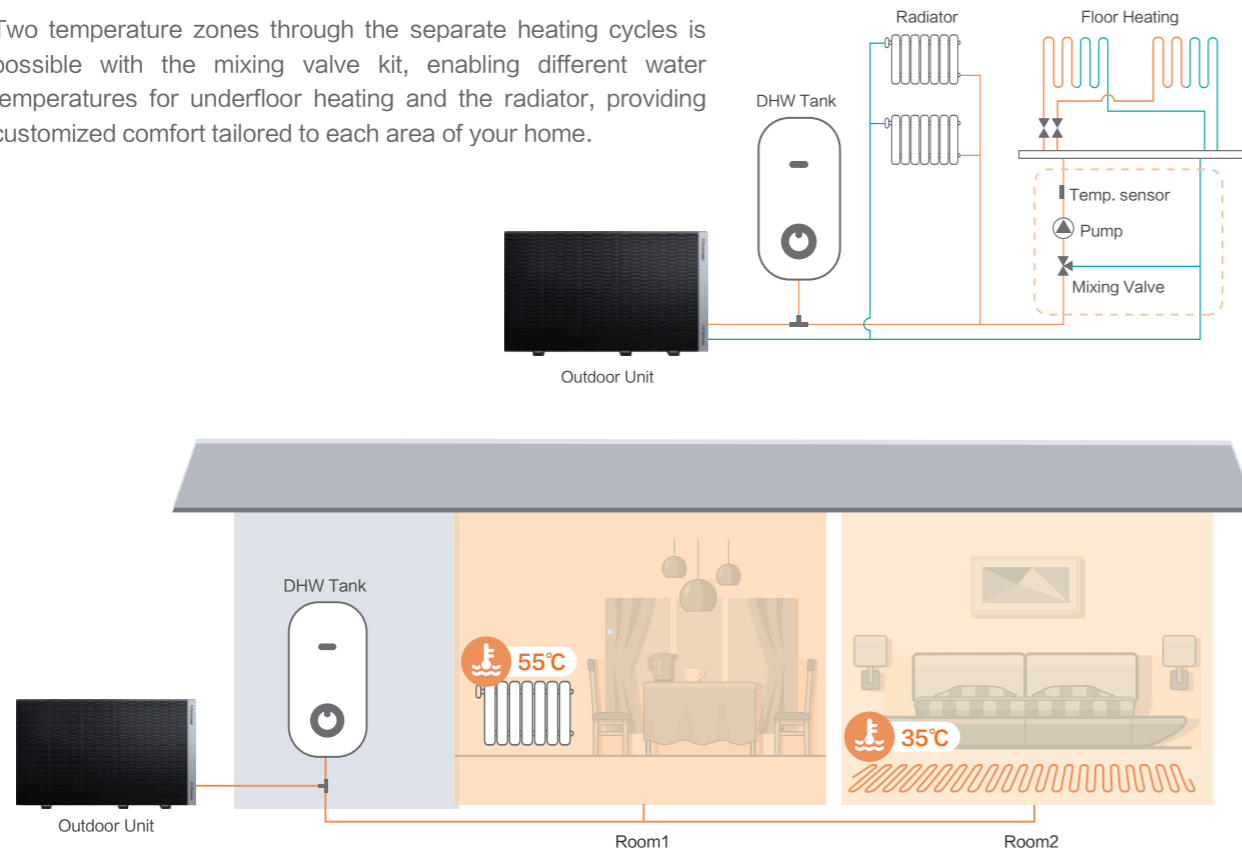
Bottom Anti-frosting Design

The specially designed anti-freezing section at the bottom of the heat exchanger prevents frost accumulation, and the bottom plate is equipped with electric heating to prevent ice blockage, maintaining seamless functionality of the unit throughout the year.



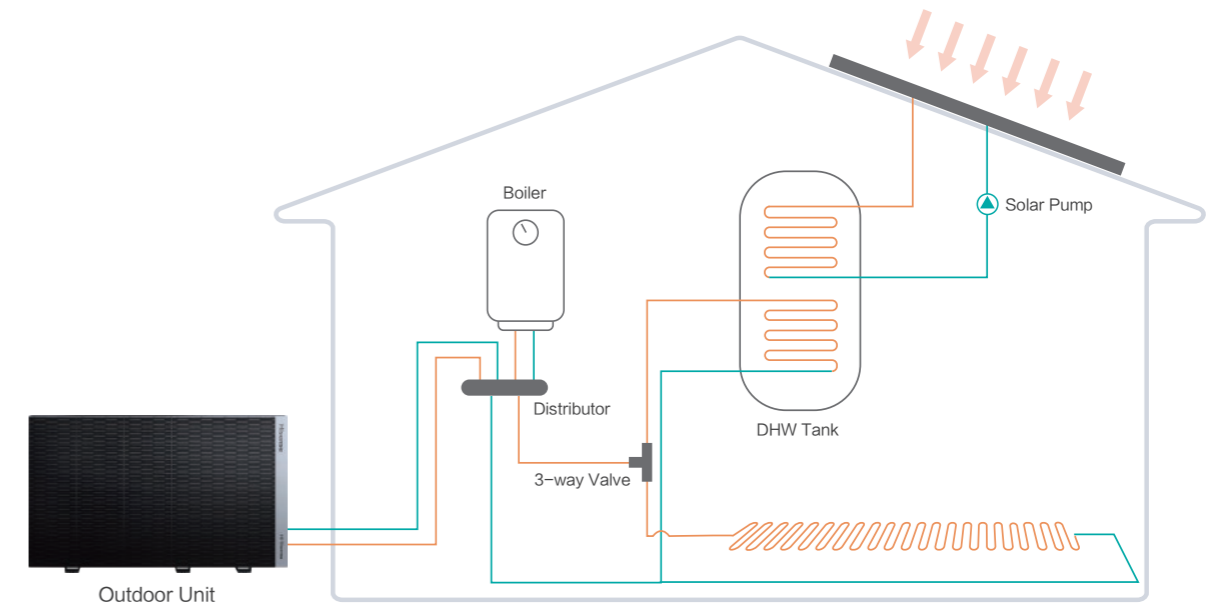
Two Separate Temp. Cycles

Two temperature zones through the separate heating cycles is possible with the mixing valve kit, enabling different water temperatures for underfloor heating and the radiator, providing customized comfort tailored to each area of your home.



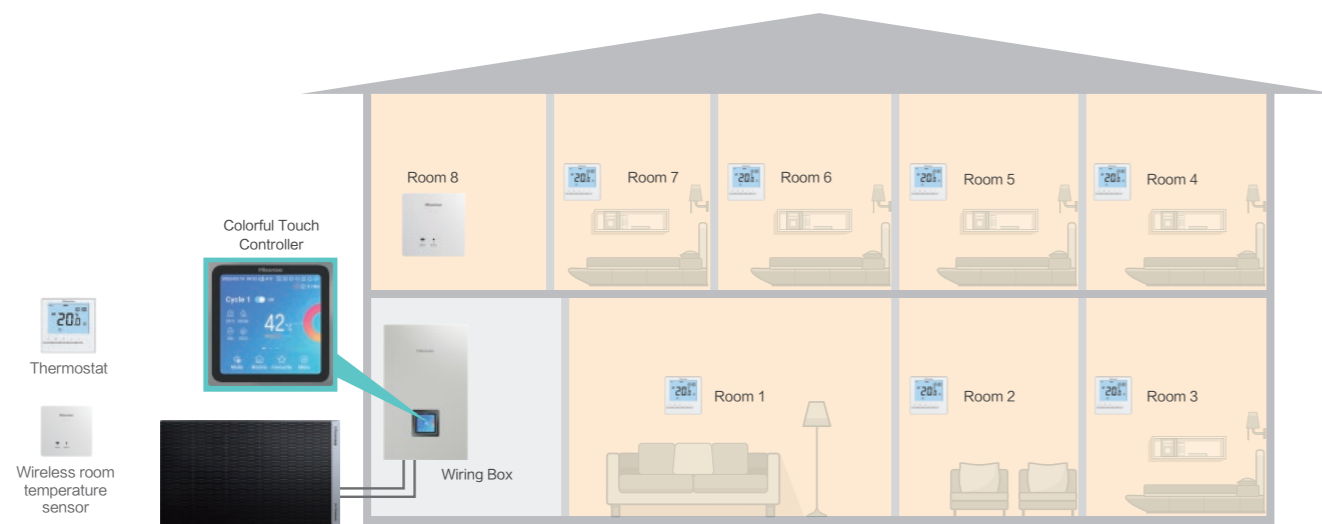
Interlock with 3rd Party Heat Source

Hi-Therma Smart M Series can interlock with the 3rd party heat source, like the solar thermal or the boiler which can work as an auxiliary heat source. Thanks to the interlock design, both the user experience and energy efficiency can be optimized.



8 Rooms Independent Temp. Control

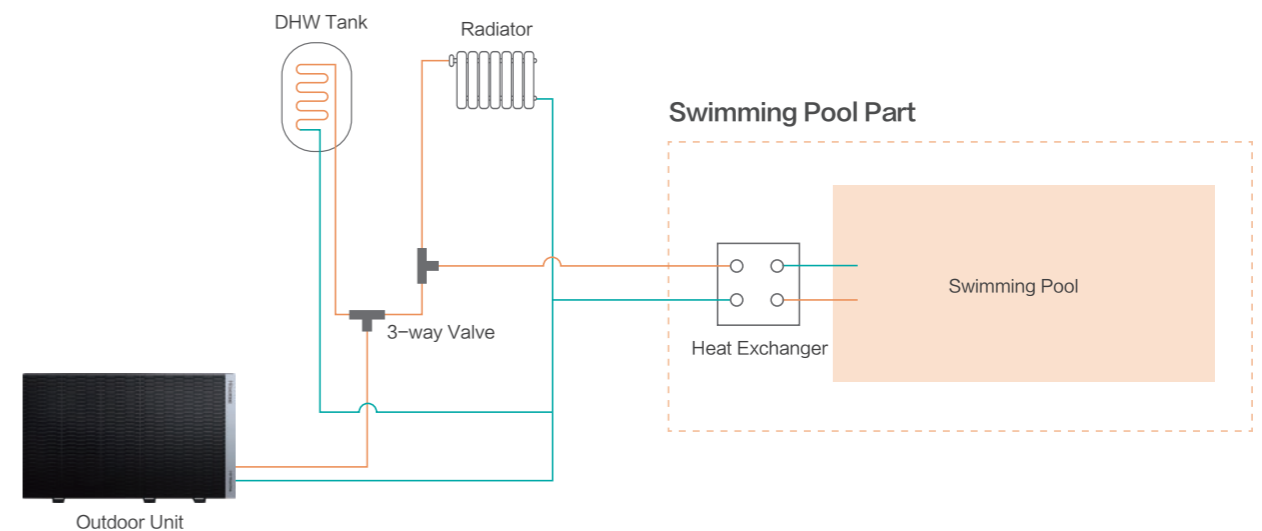
The temperature of up to 8 rooms can be independently controlled through installing temperature sensors or room thermostats in the rooms, satisfying the diverse needs of users.



Note: In one Hi-Therma system, up to 2 room thermostats and max. 6 wall mounted temp. sensors can be connected.

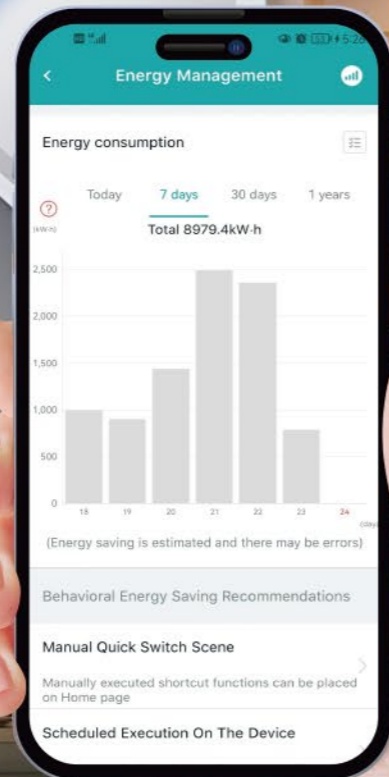
Swimming Pool Heating Available

Enhance your swimming experience with the Hi-Therma Smart M Series which is capable of heating your swimming pool. When the swimming pool operation mode is activated, the hot water will go into the swimming pool heat exchanger, allowing to heat the swimming pool water to a comfortable temperature between 24°C and 33°C.



Easy Use

Hi-Cloud



Third-party Voice Assistant
works with the Google Assistant
WORKS WITH amazon alexa

ConnectLife

USB Plug-and-Play Configuration with Power Bank

Multiple Networking Options: Wireless or Wired

Modbus Integration Supported

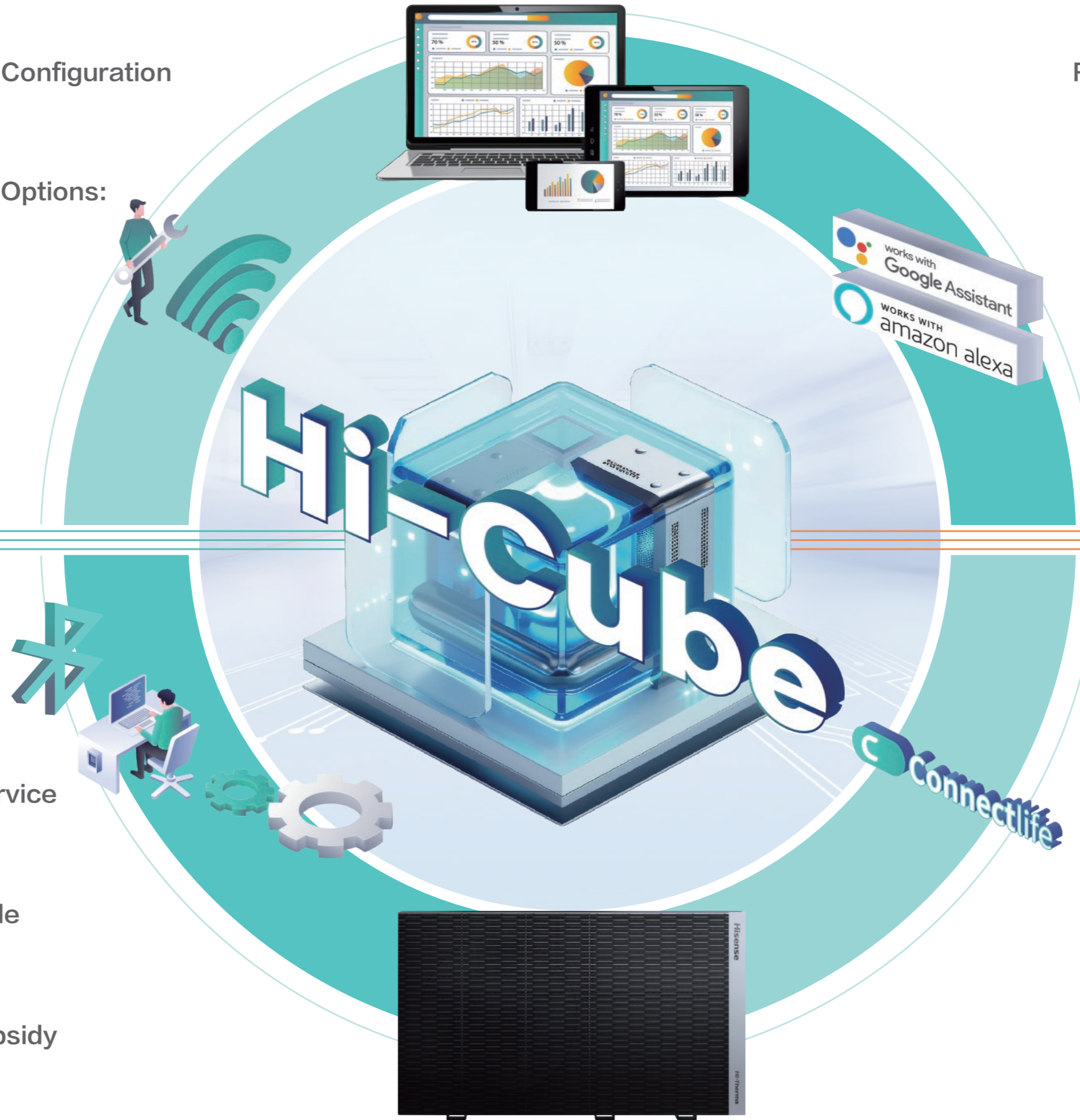


Engineer

One-stop Repair Service

OTA Remote Upgrade

Data Storage for Subsidy



Remote Control, Anytime and Anywhere

Smart Control with Voice Assistant

Interconnection with ConnectLife



End User

Remote Maintenance Request

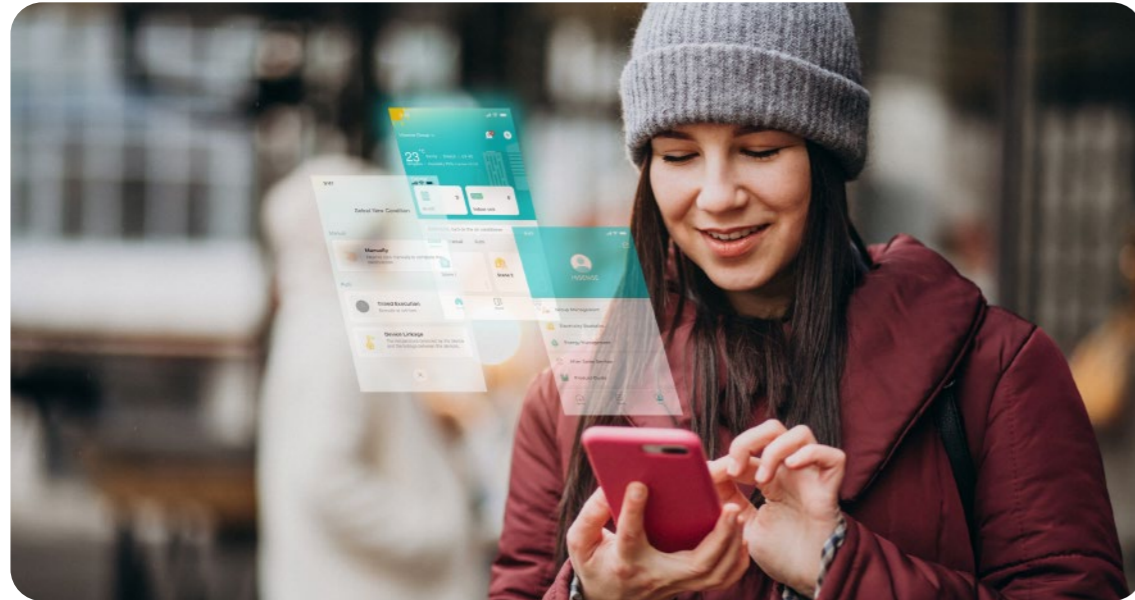
Energy Consumption Visualization

OTA Realtime Upgrade

Remote Control, Anytime and Anywhere

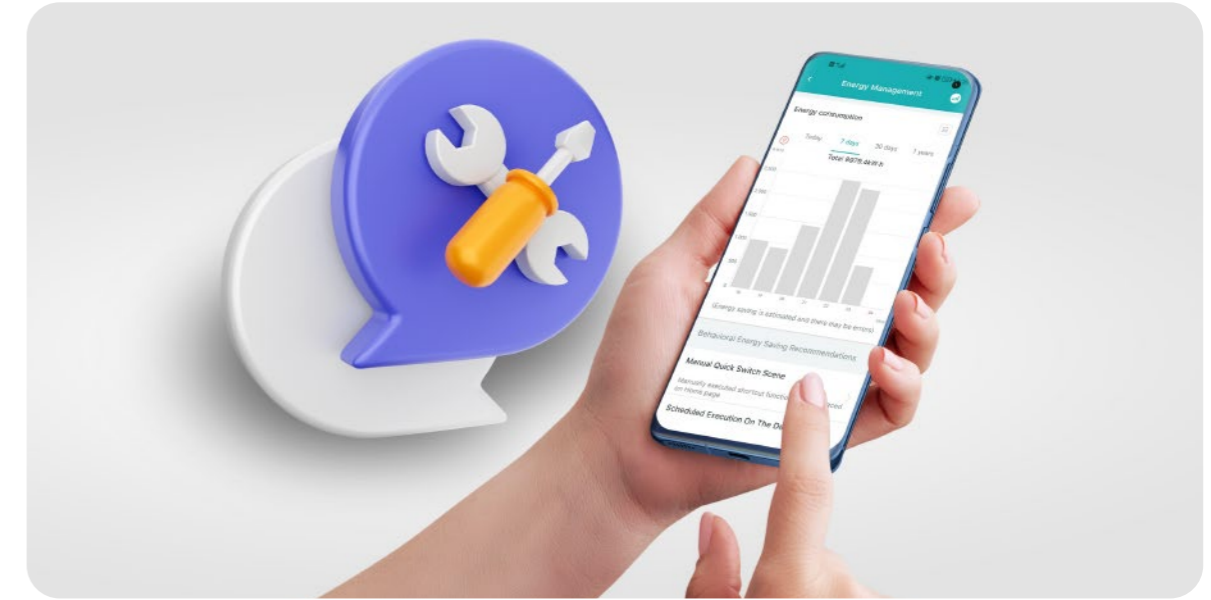
Whether you're at home or away, Hi-Cube keeps you connected, allowing you to manage and adjust settings effortlessly at anytime and anywhere, ensuring optimal performance and energy efficiency.

- on/off
- 14 languages available
- Multiple scenes setting (timer/holiday mode)
- Temp. setting of rooms, domestic hot water and water cycles
- Energy management display (daily/weekly/monthly/yearly)



Remote Maintenance Request

For any issues with Hi-Therma Smart, you can easily report them for repair with just one tap through the Hi-Mit, enjoying quick responses and professional services. Our technicians can remotely assist in troubleshooting, reducing your waiting times.



Smart Control with Voice Assistant and ConnectLife

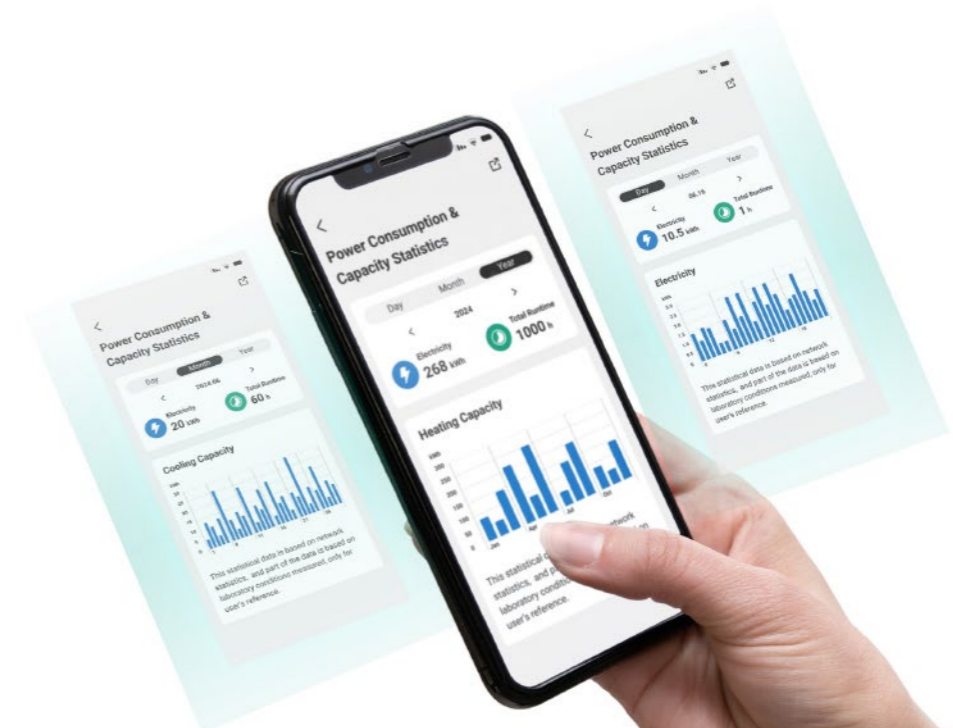
When at home, you can wake up Hi-Therma Smart without having to walk over to it. Enjoy voice-controlled convenience to manage your home with compatibility for Alexa and Google Assistant. Besides, it can also be compatible with the ConnectLife home appliance integration control, where your fridge, washing machine, air conditioner, and more Hisense home appliances can be managed together in the same app.



*Note: ConnectLife is under development and will be available in mid-2025.

Energy Consumption Visualization

With advanced energy management features, Hi-Therma Smart enables you to check daily, weekly, and monthly electricity data, and set energy-saving modes accordingly, providing a more economical, efficient, and comfortable home.



USB Plug-and-Play Configuration

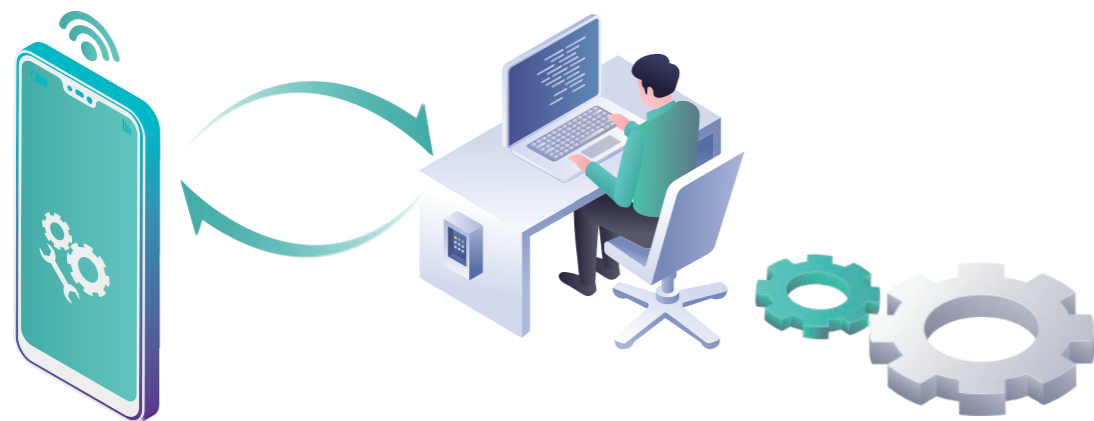
One-click Configuration Import: Just plug in the power bank and the unit powers up. With one click, you can import the configuration file, enabling the unit to be quickly activated.

One-click Configuration Export: Copy it to another machine of the same type for direct use, ensuring high operational reliability



One-stop Maintenance Service

The Hi-Checker functionality is now integrated into Hi-Mit, then service providers can remotely diagnose issues and find solutions through Hi-Cloud accounts. This has reduced service time from the previous 2-3 days of frequent on-site visits to just 2-3 hours.



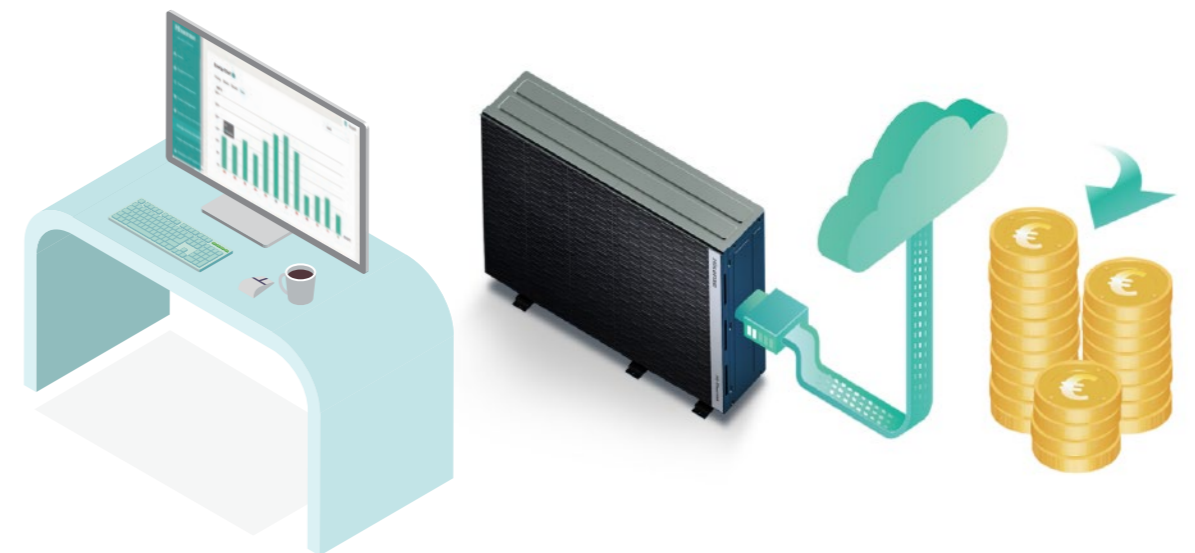
OTA Remote Upgrade

OTA remote or USB on-site upgrades for both indoor and outdoor units, keeping the system always cutting-edge and future-proof.



Data Storage for Worry-free Subsidies

The USB feature can also log and upload the unit's real-time operation data every hour for a period of 10 years, which can be used to apply for energy efficiency subsidies from Germany's Federal Office for Economic Affairs and Export Control (BAFA). Other EU countries are also following Germany's lead to comply with EU energy consumption regulations.



Easy Installation



Easy Transportation with Compact Body

With only 840mm in height and min.114kg in weight, the Hi-Therma Smart M Series allows for effortless transportation in both small vans and large trucks, making it easy to handle and install.



Detachable Modular Grilles

Previously, it was necessary to dismantle the entire grille when carrying out maintenance, which was time-consuming and troublesome. Now, the modular design allows service providers to remove only the section that needs repair. It not only improves the efficiency and convenience but also reduces the risk of accidental maloperations.



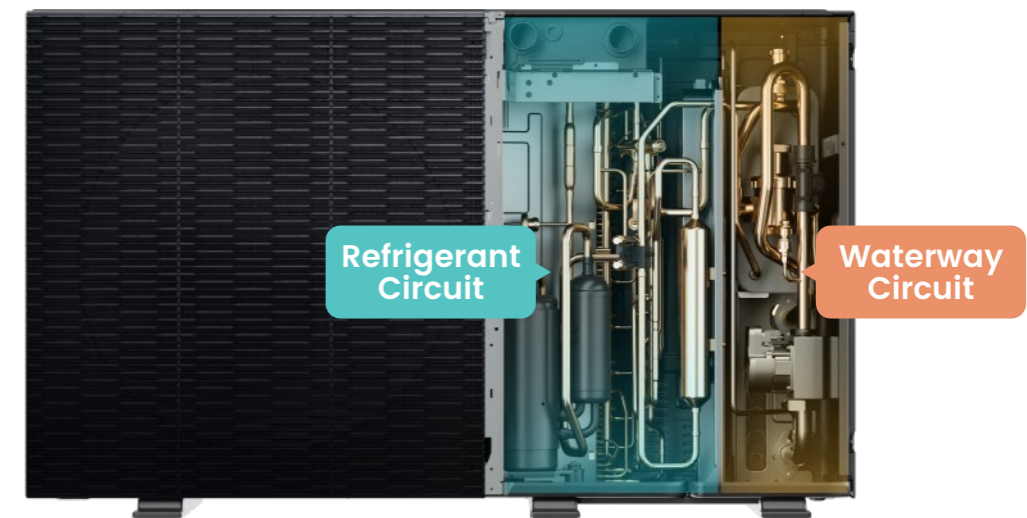
Easy Installation with Base Brackets

With three independent base brackets, the unit can be easily installed horizontally in different ground conditions without removing the grille.



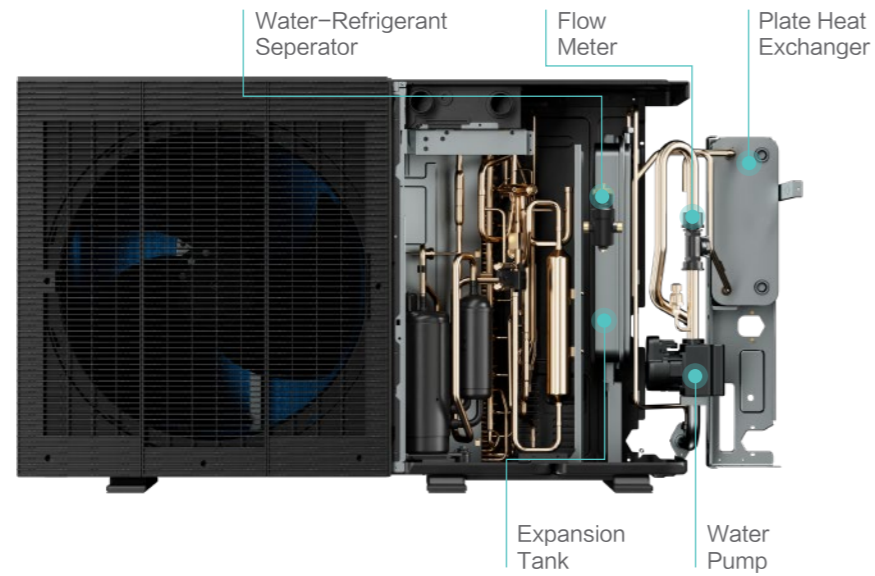
Convenient Curcuit Commissioning

The waterway and refrigerant circuits can be commissioned by only one person, saving valuable time and labor costs while ensuring each component is thoroughly inspected for optimal system reliability.



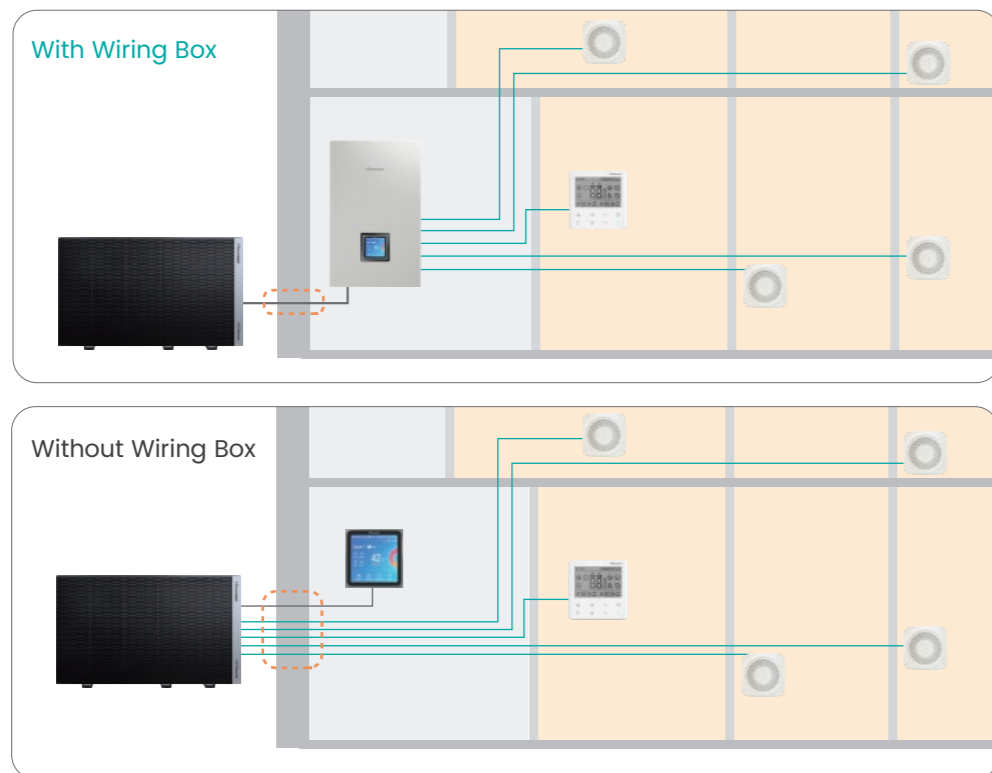
Integrated Waterway Components

Hi-Therma Smart M series featuring all-in-one design allows easy installation without additional refrigerant piping work and refrigerant charge. Only the connection of water pipes is required on site, which greatly simplifies the on-site installation work.



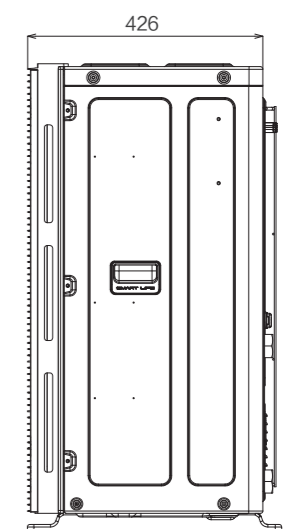
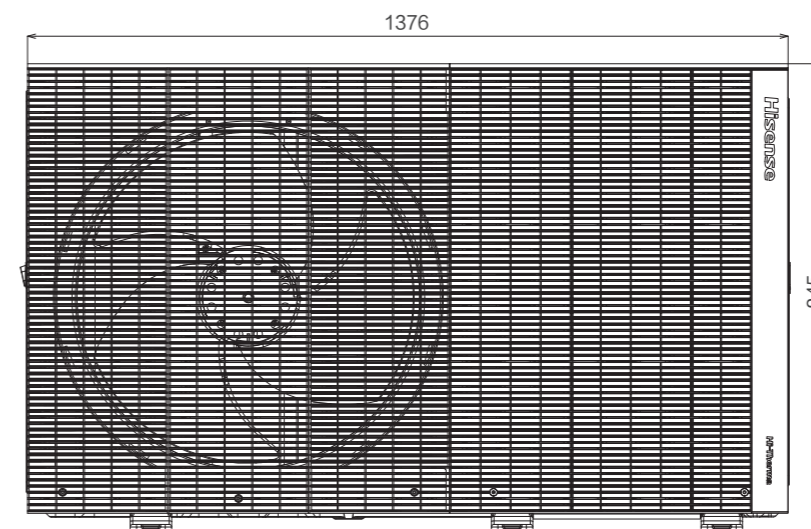
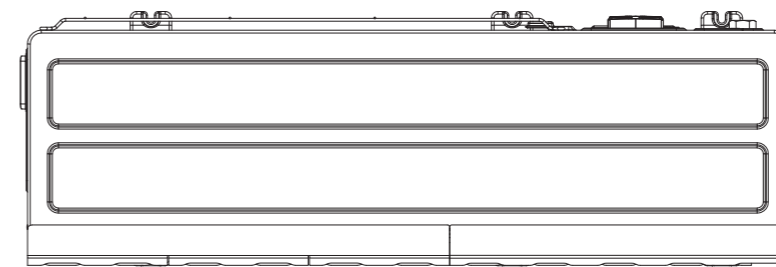
Streamlined Wiring Connection

The wiring box and the outdoor unit can be connected with just one cable, minimizing wall penetration and shortening total wiring length. It greatly reduces labor and time costs, making it more cost-effective and time-saving than ever before.



Dimensions

Unit: mm



Specification



Model		AHZ-050HCPB1A	AHZ-080HCPB1A	AHZ-100HCPB1A			
Power Supply		1N, 220~240V, 50Hz					
Nominal Heating Operation	7/6°C	30/35°C	Capacity	kW	5.0	8.0	10.0
			COP	-	5.2	5.1	4.8
		47/55°C	Capacity	kW	5.0	8.0	10.0
			COP	-	3.15	3.2	3.1
	-7/-8°C	30/35°C	Capacity	kW	5.0	8.0	10.0
			COP	-	3.0	3.0	2.8
		47/55°C	Capacity	kW	5.0	7.0	8.0
			COP	-	2.2	2.15	2.15
Nominal Cooling Operation	35/---°C	12/7°C	Capacity	kW	5.5	8.0	9.0
			EER	-	3.3	3.3	3.3
		23/18°C	Capacity	kW	5.5	8.0	10.0
			EER	-	5.2	5.0	4.7
Seasonal Performance	Water Outlet 35°C	SCOP		-	5.08	5.05	5.00
		Seasonal Heating Efficiency (ηs)		%	200	198	197
		Energy Rating		-	A+++	A+++	A+++
		SCOP		-	3.81	3.93	3.81
Seasonal Performance	Water Outlet 55°C	Seasonal Heating Efficiency (ηs)		%	149	154	149
		Energy Rating		-	A++	A+++	A++
		Normal Mode		dB(A)	42	42	43
		Low Noise Mode		dB(A)	38	38	39
Sound Pressure	Night shift Mode		dB(A)	36	36	37	
	Normal Mode		dB(A)	53	53	54	
Sound Power	Normal Mode		dB(A)	53	53	54	
	Condenser Fan Quantity		-		1		
Fan	Air Flow Rate		m³/h	2870	3780	3780	
	Height × Width × Depth		mm	845 × 1376 × 426			
Outer Dimensions	Height × Width × Depth		mm	1025 × 1500 × 570			
Packing Dimensions	Net Weight		kg	114	122	122	
	Gross Weight		kg	137	145	145	
Refrigerant System	Compressor	Type	-	Rotary			
		Quantity	-	1			
	Refrigeration Oil	Type	-	PAG VG60			
		Charge	L	0.60		0.83	
Refrigeration Charge	Type	-	R290				
	Before Shipment	kg	0.90	0.98	0.98		
Operation Range	Heating	Outdoor Ambient Temperature	°C (DB)	-25~35			
		Outlet Water Temperature	°C	20~75			
	DHW	Outdoor Ambient Temperature	°C	-25~46			
		Tank water temperature	°C	30~75			
Cooling	Outdoor Ambient Temperature	°C (DB)	5~48				
	Outlet Water Temperature	°C	5~22				
Water Flow Rate	IWT: 30°C / OWT: 35°C ΔT: 5°C		m³/h	0.86	1.38	1.27	
DC Water Pump	Type		-	Inverter			
	Max. Lift Pressure		m	13			
	Max. Water Flow Rate		m³/h	4.5			
	Max. Power Input		W	95			
Safety valve		-	Yes (3 bar)				
Shut-off valve		in.	1", DN25				
Water Installation	Connection Type		-	Screwed connection			
	Shutdown Valve		mm (in.)	G1"(male)-G1"(female)			
	Inlet Pipe Diameter		mm (in.)	G1"(female)			
	Outlet Pipe Diameter		mm (in.)	G1"(female)			

NOTES:
 *1: Heating/Cooling nominal performances at full load conditions according to EN 14511.
 *2: According to EN14825. Climate Zone AVERAGE. Energy efficiency scale from A+++ to D.
 *3: The above noise values are measured in the anechoic chamber without reflected echo, therefore the impact of the reflected echo must be taken into consideration at the scene.
 *4: OAT: Outdoor ambient temperature; IWT: Inlet water temperature; OWT: Outlet water temperature

Thermal tank

Hot water heating installation options

Why optimal for a domestic hot water tank?

Whether your requirement is only hot water or integrate it with solar systems, we provide you with unparalleled solutions that prioritize most convenience, energy effectiveness, and reliability.

Convenience

Options are available in stainless steel with capacities of 200 and 300 liters HDHWT-200/300L30HE.

Effectiveness

Top-notch insulation ensures minimal heat loss. It can be used as a single unit or as part of an integrated system.

Reliability

To prevent the growth of bacteria, the unit can heat water up to 75°C* at regular intervals.

Note: This temperature range 55°C~75°C is achievable only when the booster heater is in use.



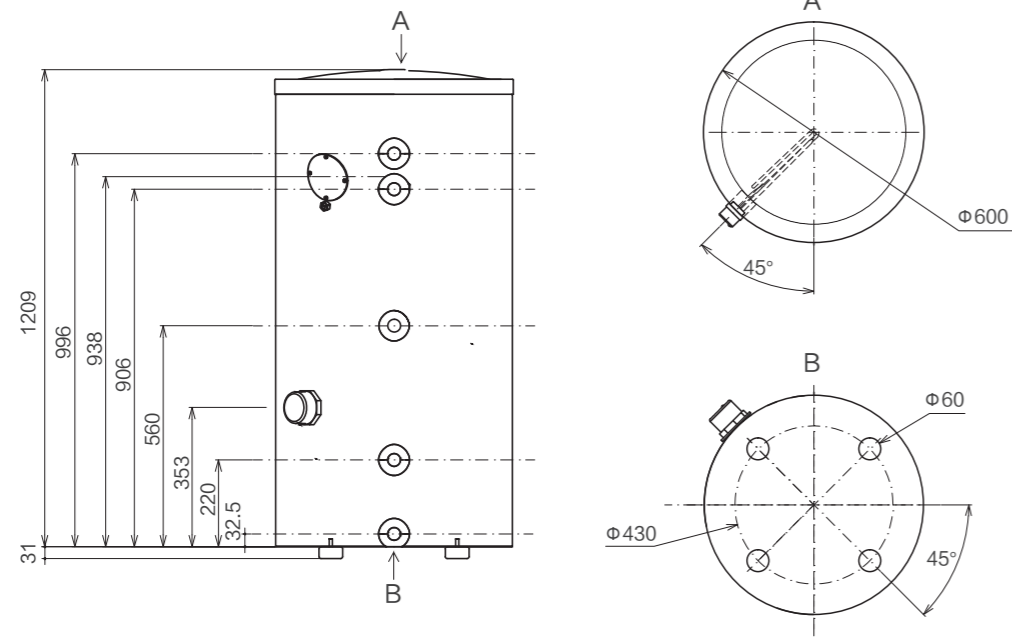
Specification

Model		HDHWT-200L30HE	HDHWT-300L30HE	
Casing	Colour	Neutral white		
	Material	Epoxy coated steel / Epoxy-coated mild steel		
Tank	Empty weight	kg	49	60
	Net water volume	L	185	260
	Material	-	DUPLEX 2205	
	Maximum water temperature	°C	75	
	Energy efficiency class		B	
	Operating pressure	bar	6	
Heat exchanger	max pressure	bar	10	
	Tube material		Stainless steel (SUS316L)	
	Face area	m²	1.8	2.07
	Internal coil volume	L	9.9	11.4
Booster heater	Operating pressure	bar	3	
	Capacity	kW	3	
Power supply	Phase/Frequency/Voltage	V/Hz	1N, 220~240V, 50Hz	
Protection method			Temperature and pressure relief valve (95°C/0.6Mpa)	
Safety Thermostat	Automatic Reset	°C	75	
	Manual Reset	°C	87	

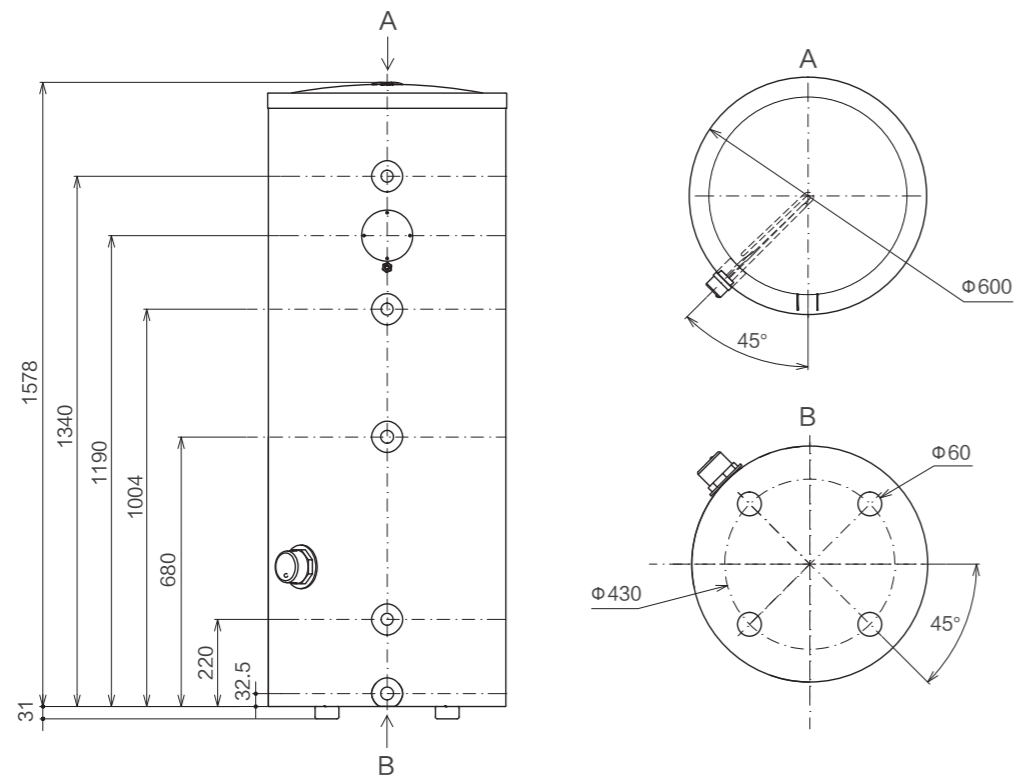
Dimensions

Unit: mm

200L



300L



Accessories



Ambient Temperature Sensor

HC-T-01M

Measure the outdoors ambient temperature in the area where the outdoor unit is installed.



Water Temperature Sensor

HTS-E1000A1

Water temperature sensor for pipeline, tank and hydraulic components



Wall Mount Temperature Sensor

HSE-MF01

Wall mounted room temperature sensor, with communication to heat pump system.



Room Thermostat

HSRE-MF01

Room thermostat for room temperature control, with communication to heat pump system. Compatibility: Split Heat Pump System



3-way Valve

HESE-3W25A

Valve to allow operation in heating/hot water



Wiring Box

HOPT-EWB01

Streamline installation with simplified wiring connection



Auxiliary electric heater

DRE-300WG
DRE-600WG
DRE-S600WG

Auxiliary electric heating for use in emergency situations when the heat pump malfunctions

Engineering Tools

Hi-Therma Designer

Hi-Therma Designer is a specialized program for choosing Hisense ATW heat pump products, enabling an accurate and quick model selection for projects. It's an online tool for quick and easy access, and fully compatible with computer, tablet and smartphone. The user could open and edit the project at any time and anywhere.

◆ User-friendly operation

This program provides a lot of pictures, schemas and explanations. With less input and choice, the user can get the proper selection quickly and easily.

◆ CO₂ emission calculation

The user can calculate the CO₂ emission that can be reduced from conventional heating systems with other energy.

◆ Selection comparison

Through this function, users can compare two different selections for one project, so as to get the best solution.

◆ Report

A professional report with full information and quotation can be output to submit to clients. The user can select the part of full size report to make a short report.

◆ Energy consumption calculation

The software includes the build-in climate history data for hundreds of cities, which enabling easy load calculation. Furthermore, the user can calculate the annual energy consumption and efficiency.

◆ Noise level assessment

The noise level to the closed house, such as neighbor's house, could be assessed with a simulation according to the outdoor unit installation.

◆ Customization of accessories

The installer can input and customize the accessories which is used to buy locally.

<https://www.hitherma-designer.com>

